

# USB 3.0 Host Card

Model #: U3PCI-1

2-Channel PCI-e Adapter Card



User Manual  
- Hardware Installation Guide  
- Software Installation Guide



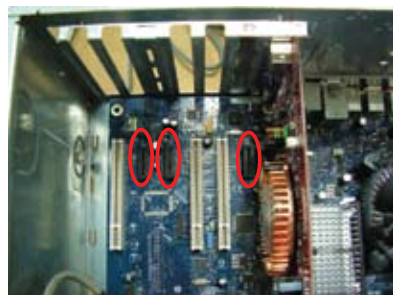
www.kingwin.com

## Hardware Installation Guide

### PCIe-card Installation Guide

General instructions for installing the card are provided below, since the design of computer cases and motherboards varies. Refer to your computer's manual for further information, if needed.

1. Turn off the power to your computer and any other connected peripheral devices.
2. Unplug the power cord from the back of the computer.
3. Remove your computer's sided-cover.
4. Remove the slot bracket from an available PCI Express slot.



5. To install the card, carefully align the card's bus connector with the selected PCI Express slot on the Motherboard.



6. Push the board down firmly, but gently, until it is well seated.

7. Replace the slot bracket holding screw to secure the board to the rear slot panel.
8. Connect the power supply connector to the PCI-e card.



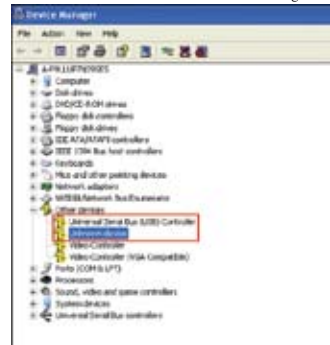
9. Replace the computer sided-cover and reconnect the power cord.
10. Restart the system and refer to the next section for Software Installation.

## Software Installation Guide

Windows XP/Vista 32bit/Vista 64bit/7 32bit/7 65 bit operation systems requires a driver installation from the utility disk CD-ROM.

To run the installation follow the directions below:

1. After installing the board, reboot your system.
2. When **Found New Hardware Wizard** dialogue box loads on screen, click **Cancel**.



3. Insert driver CD , check **CD-ROM drives**, uncheck the other boxes and click **Driver**.
4. Press **"Install"** to auto-install the driver.



5. Click **Next**



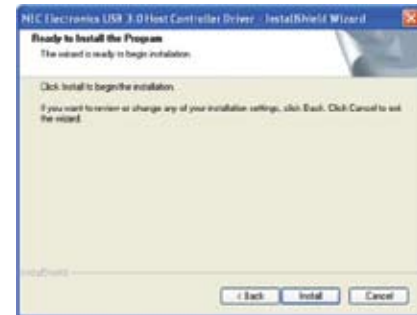
6. Accept the license agreement and click **Next**



7. Click **Next**



8. Click **Install**



9. Click **Finish**.



- 10 Check the PCI-e card install completely.



Model #: U3PCI-1



KW Technology Inc. - U.S.A. (Headquarters)  
4020 Valley Blvd, Unit 100  
Walnut, CA 91789  
TEL: 1-909-598-2888  
FAX: 1-909-348-1133  
E-MAIL: info@kingwin.com  
WWW: http://www.kingwin.com