



Performance LCD Fan Controller



USER'S MANUAL FPX-002

Quick Installation Guide

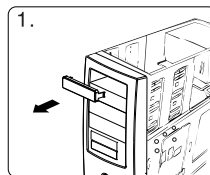
Specifications

Dimensions: 5 7/8"(L) x 3"(W) x 1 11/16"(H)
Color: Black
Weight: 0.40 LBS
Screen Size: 3.75 inches
Number of Channels: 3

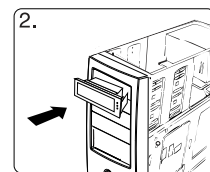
Features

ABS Front Bezel
Controls and Monitors 3 Sets of Fan Speeds and Temperatures
Display Temperatures in Both F and C
Ultra Fast Selection and Response Time
Over Temperature Alarm
Time Display
Fit 5.25" Bay

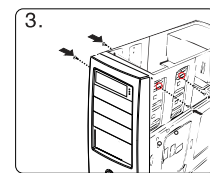
Installation



1. Remove the slot cover of an empty 5.25" drive bay

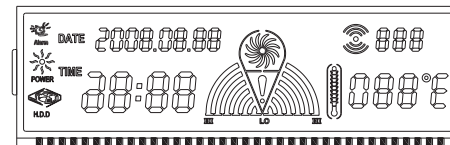


2. Carefully insert the FPX-002 into the bay and push it inward until the FPX-002 screw hole is aligned with the hole of the bay



3. Secure the FPX-002 with the packed screws. Use 2 screws on each side to securely hold the device

Installation



1) Temperature Measurement

In the initial state of module, press MODE, it can change the display of 3 kinds of temperature: CPU → HDD → SYS → CPU → the scope: 0°C ~ 99°C, accuracy: ±2°C

2) Open and close alarm

In the initial state of module, press ALARM C/F, it can open or close alarm.

3) Change the temperature display mode

In the initial state of module, long press ALARM C/F about 3 seconds, it can change °C/°F temperature display mode.

4) Fan control

a. In the initial state press SPEED once it can set low speed of fan, twice means middle speed, three times means high speed of fan.
b. The module also can control fan speed according to the temperature that checked by SENSOR. Higher temperature, the speed of fan will be quicker.

5) Overtemperature alarm

The default temperature of CPU, HDD, SYS: CPU, 70°C; HDD, 50°C; SYS, 60°C. Users can set according to your need(5°C~90°C). You can turn off the buzzer by pressing any keystroke.

Installation

6) Time display

It can display time in 24-hour clock. It also has perpetual calendar.

Time adjustment

a. Set year: long press MODE about 3 seconds → year character twinkles → press ALARM C/F set year.

b. Set month: long press MODE about 3 seconds → then press MODE once → month character twinkles → press ALARM C/F set month.

c. Set date: long press MODE about 3 seconds → then press MODE twice → date character twinkles → press ALARM C/F set date.

d. Set hour: long press MODE about 3 seconds → then press MODE three times → hour character twinkles → press ALARM C/F set hour.

e. Set minute: long press MODE about 3 seconds → then press MODE four times → minute character twinkles → press ALARM C/F set minute.

Alarm adjustment

a. Set hour: long press MODE about 3 seconds → then press MODE five times → hour character twinkles → press ALARM C/F set hour.

b. Set minute: long press MODE about 3 seconds → then press MODE six times → minute character twinkles → press ALARM C/F set minute.

Installation

Alarm temperature adjustment

a. CPU: long press MODE about 3 seconds → then press MODE seven times → CPU temp character twinkles → press ALARM C/F set CPU temp.

b. HDD: long press MODE about 3 seconds → then press MODE eight times → HDD temp character twinkles → press ALARM C/F set HDD temp.

c. SYS: long press MODE about 3 seconds → then press MODE nine times → SYS temp character twinkles → press ALARM C/F set SYS temp.

ATTENTION:

1) The product is made up of many delicate and complexed integrated circuits and transistors, which can be damaged by static easily. So please take some measures against static damage when you transport, install and use the product.

2) The Liquid Crystal Display of the product is glasswork. Please take good care of it.

3) The power of the product is two groups: +12V & +5V. And Silver Oxide Button Cells is also installed in the PCB. Please ensure powered off before installing and dismantling.



Performance LCD Fan Controller



FPX-002

KWI Technology Inc. - U.S.A. (Headquarters)
4020 Valley Blvd, Unit 100
Walnut, CA 91789
TEL: 1-909-598-2888
FAX: 1-909-348-1133
E-MAIL: info@kingwin.com
Website: www.kingwin.com