



Multi Function LCD Fan Controller Panel



USER'S MANUAL FPX-003

Quick Installation Guide

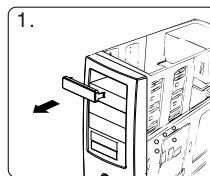
Specifications

Dimensions: 5 13/16"(L) x 3"(W) x 1 5/8"(H)
Color: Black
Weight: 0.50LB
Number of Channels: 4
Material: ABS

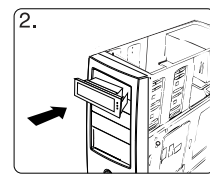
Features

ABS Front Bezel
Controls and Monitors 4 Sets of Fan Speeds and Temperatures
Front All in One USB 2.0 Card Reader
Display Temperatures in Both F and C
Ultra Fast Selection and Response Time
Alarm Temperature Display
One eSATA Port

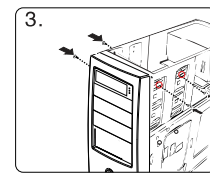
Installation



1. Remove the slot cover of an empty 5.25" drive bay

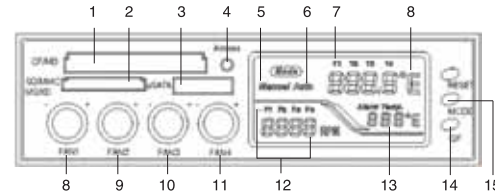


2. Carefully insert the FPX-003 into the bay and push it inward until the FPX-003 screw hole is aligned with the hole of the bay



3. Secure the FPX-003 with the packed screws. Use 2 screws on each side to securely hold the device

Installation



- 1) CF / CFII / MD / Media Slot
- 2) MS / MS PRO / MS DUO / MS PRO DUO Series Cards Media Slot
- 3) eSATA port
- 4) LED Media indicator
- 5) "Manual" MODE
-Press "MODE" button until the screen show "Manual"
F1/T1, F2/T2, F3/T3, and F4/T4 will display manually by continue pressing "MODE" button
- 6) "Auto" MODE
-Press "MODE" button until the screen show "Auto"
-F1/T1, F2/T2, F3/T3, and F4/T4 will display automatically, changing from F1/T1 to F4/T4
- 7) T1/T2/T3/T4 Temperature Display
- 8) Fan 1 Speed Control
- 9) Fan 2 Speed Control
- 10) Fan 3 Speed Control
- 11) Fan 4 Speed Control
- 12) F1/F2/F3/F4 Speed Reading Display
- 13) Alarm Temperature Display
 - a) Long press MODE(15) about five seconds
The alarm temperature will blink
 - b) Then press the C/F(14) to adjust the temperature
 - c) Once at desire temperature press mode to set
- 14) C/F Press once, then temperature will change between C and F
- 15) Press MODE to switch between "Auto" and "Manual"

Installation



Connect the 4 Pin Molex connector to your power supply



Connect the fan connectors to your fans



Connect the USB cable to the USB port on your motherboard

Installation



Connect the SATA cable to the SATA port on your motherboard



Place the temperature sensors underneath your CPU heatsink, and other components



Multi Function LCD Fan Controller Panel



FPX-003

KWI Technology Inc. - U.S.A. (Headquarters)
4020 Valley Blvd, Unit 100
Walnut, CA 91789
TEL: 1-909-598-2888
FAX: 1-909-348-1133
E-MAIL: info@kingwin.com
Website: www.kingwin.com

1.

2.

3.

4.

5.

110mm