



Multi Function LCD Fan Controller I/O Panel



USER'S MANUAL FPX-004

Quick Installation Guide

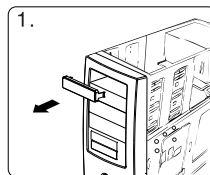
Specifications

Dimensions: 5 13/16"(L) x 3 1/2"(W) x 1 5/8"(H)
Color: Black
Weight: 0.70 LB
Number of Channels: 2

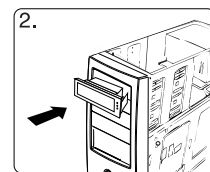
Features

ABS Front Bezel
Controls and Monitors 2 Sets of Fan Speeds and Temperatures
Front All in One USB 2.0 Card Reader
Display Temperatures in F
Two Front USB 3.0 Port
One Front eSATA Port
Ultra Fast Selection and Response Time
Alarm Temperature Display
High Definition Audio Headphone and Mic Jacks
Fit 5.25" Bay

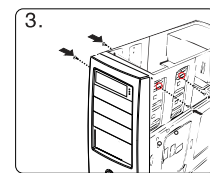
Installation



1. Remove the slot cover of an empty 5.25" drive bay

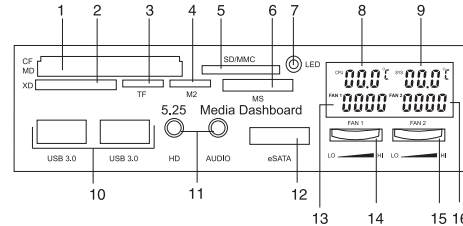


2. Carefully insert the FPX-004 into the bay and push it inward until the FPX-004 screw hole is aligned with the hole of the bay



3. Secure the FPX-004 with the packed screws. Use 2 screws on each side to securely hold the device

Installation

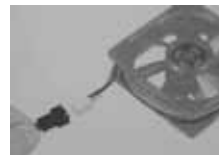


- 1) CF / CFII / MD / Media Slot
- 2) SMC / SM / XD / XD Type M / XD Type H Media Slot
- 3) TF
- 4) M2
- 5) SD / MMC / Micro SD / SDHC / Mini SD / MMC Series Cards Media Slot
- 6) MS / MS PRO / MS DUO / MS PRO DUO Series Cards Media Slot
- 7) LED Media indicator
- 8) CPU Temperature Display (Default alarm setting 158 °F)
- 9) SYS Temperature Display (Default alarm setting 158 °F)
- 10) USB 3.0 ports
- 11) Audio Port
- 12) eSATA Port
- 13) Fan 1 Speed Reading Display
- 14) Fan 1 Speed Control
- 15) Fan 2 Speed Control
- 16) Fan 2 speed Reading Display

Installation



Connect the 4 Pin Molex connector to your power supply



Connect the fan connectors to your fans

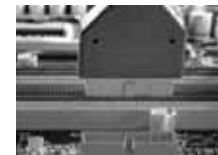


Connect the USB cable to the USB port on your motherboard

Installation



Connect the SATA cable to the SATA port on your motherboard



Connect the USB 3.0 cable to motherboard



Multi Function LCD Fan Controller I/O Panel



FPX-004

KWI Technology Inc. - U.S.A. (Headquarters)
4020 Valley Blvd, Unit 100
Walnut, CA 91789
TEL: 1-909-598-2888
FAX: 1-909-348-1133
E-MAIL: info@kingwin.com
Website: www.kingwin.com

1.

2.

3.

4.

5.

110mm