



# ATK-35U-BK/ATK-35U-S User's Manual



**!** **ATTENTION**  
New HDD Must Be  
● Formatted Before Use

**Package Contents:**

- User Manual
- ATK-35U-BK / ATK-35U-S Enclosure
- USB Cable
- Power Adapter
- Screw Pack

**Features:**

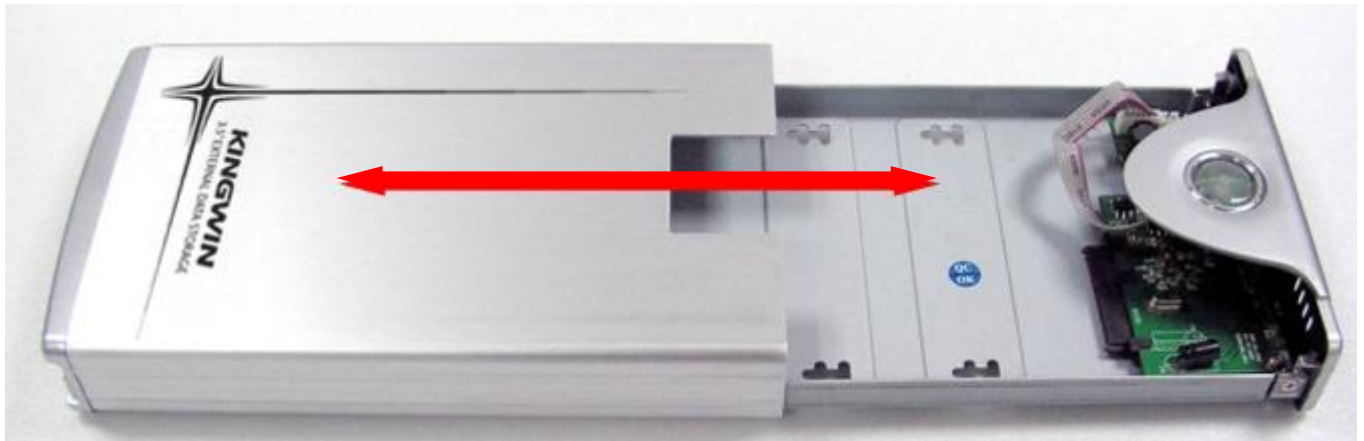
- 3.5" SATA External Enclosure
- Up to 480 Mbps Data Transfer Rate in USB 2.0
- Plug & Play
- Support Hot Swap
- Windows & Mac OS Compatible
- Rohs Compliant

**Specs:**

- Model: ATK-35U-BK / ATK-35U-S
- H.D.D. Support: 3.5" SATA Hard Disc
- Dimensions: 5" W x 8 1/2" L x 1 1/4" H
- Support OS: Windows 98SE/ME/2000/XP/Vista  
Mac OS 10 x & Above
- Interface: SATA to USB 2.0
- USB Transfer Rate: Up to 480 Mbps

# Hard Drive Installation

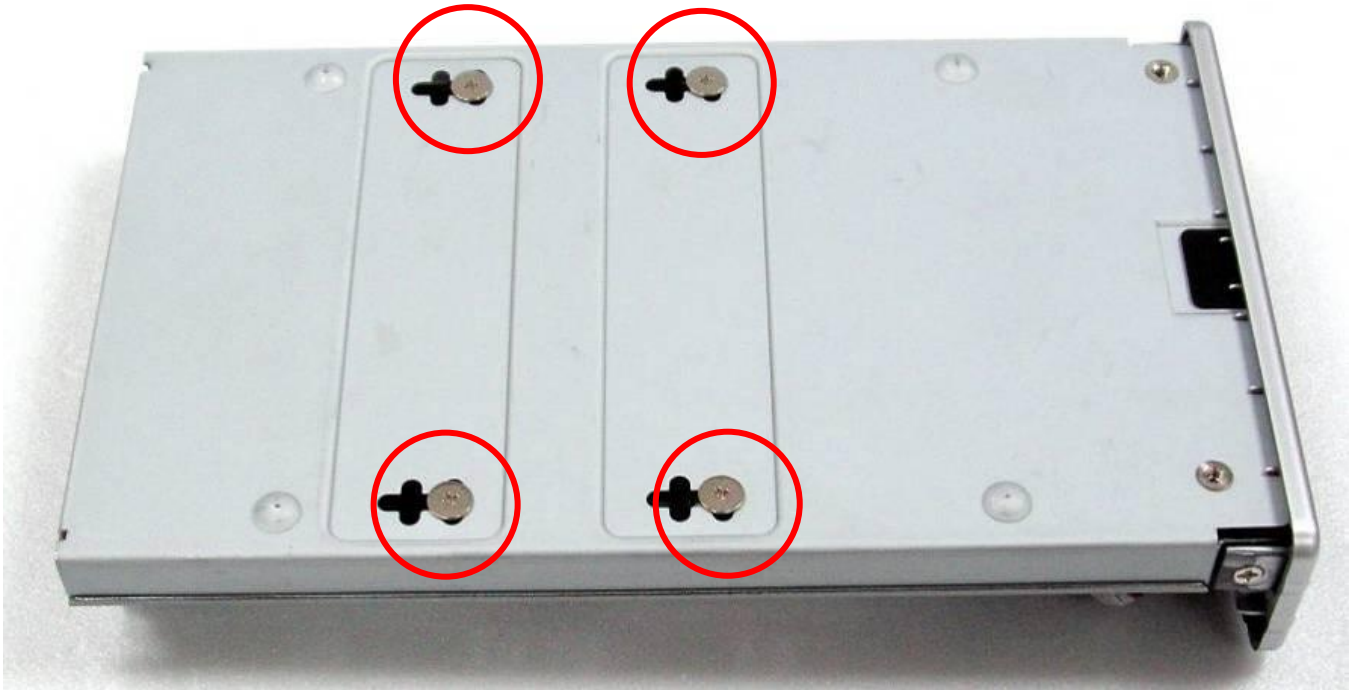
1. Unscrew the enclosure.
2. Pull out the front panel, you will see the H.D.D. tray.



3. Connect the HDD to the SATA connector. Make sure the drive is connected tightly.



**4. Screw the HDD onto the tray from bottom.**



**5. Push the tray into the aluminum case.**



**6. Screw the tray and external enclosure together.**



# **Driver Installation**

## ***Windows ME / 2000 / XP / Vista***

No drivers are necessary when using Windows ME/XP/2000/Vista. If the drive does not appear under “my computer”, please be sure to partition your hard drive.

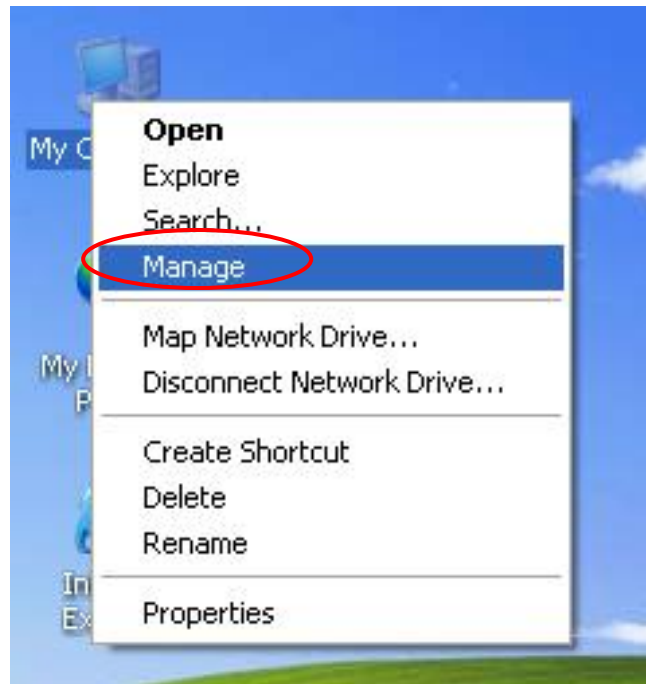
## ***Windows 98 /98SE***

1. Go to [http://kingwin.com/download\\_center/uploads/215\\_98Driver\\_1.0.0.6.zip](http://kingwin.com/download_center/uploads/215_98Driver_1.0.0.6.zip)
2. Follow instruction for installing the 98 driver.

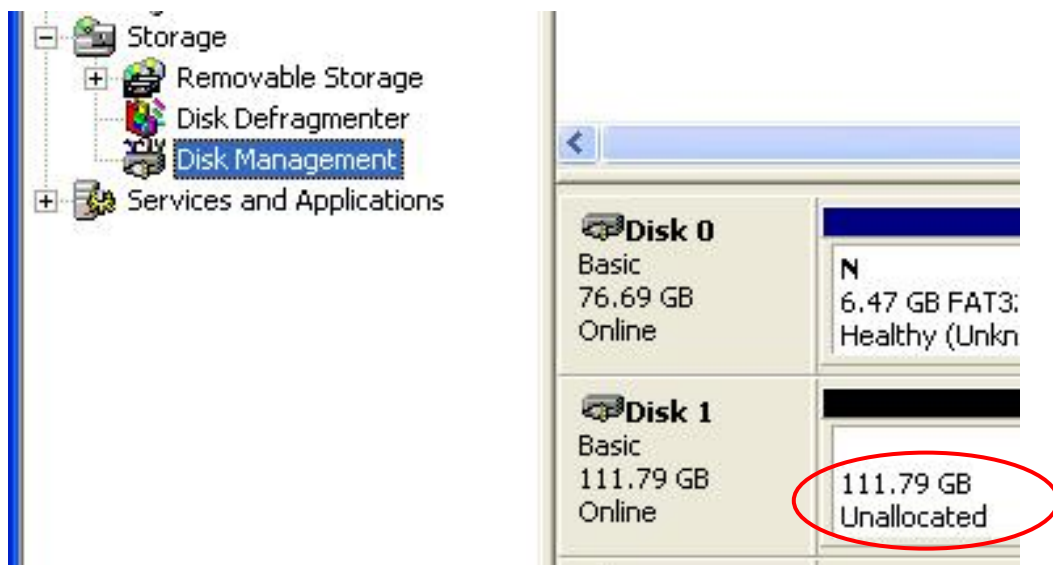
# HDD Formatting Guide

- You may format your external HDD through USB2.0 connection.
- Please make sure your external HDD is turned on and well connected to the PC before formatting the HDD.

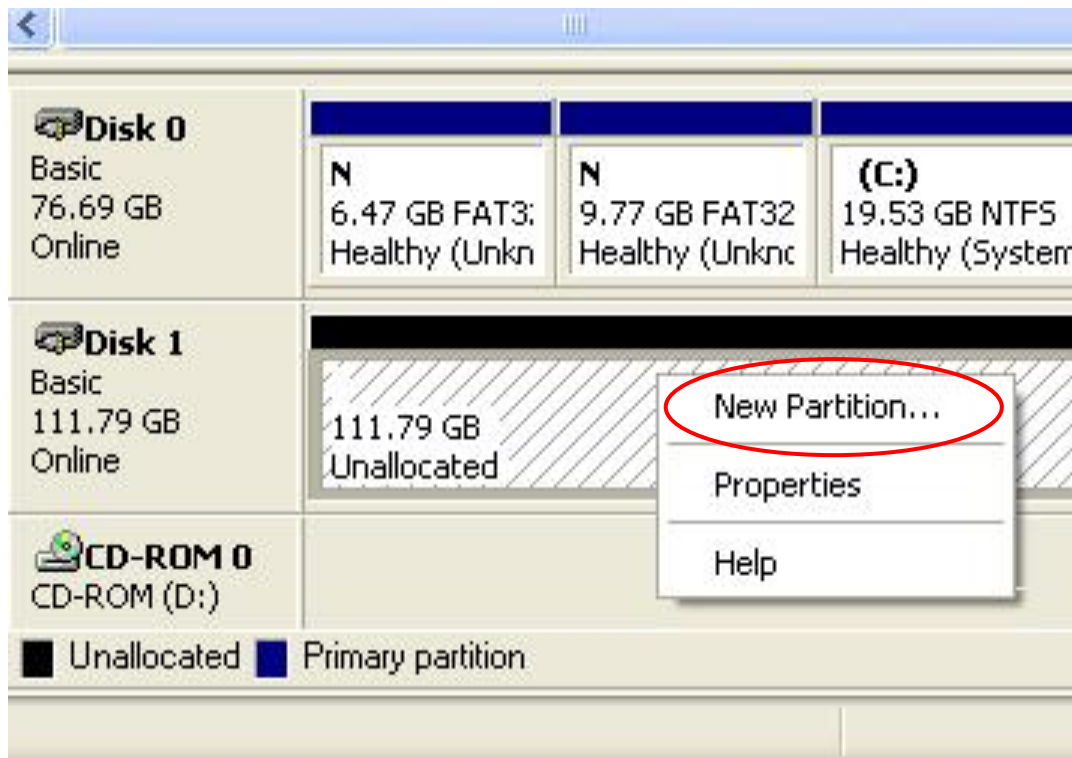
1. Right-click “My Computer” icon and select ”Manage” column.



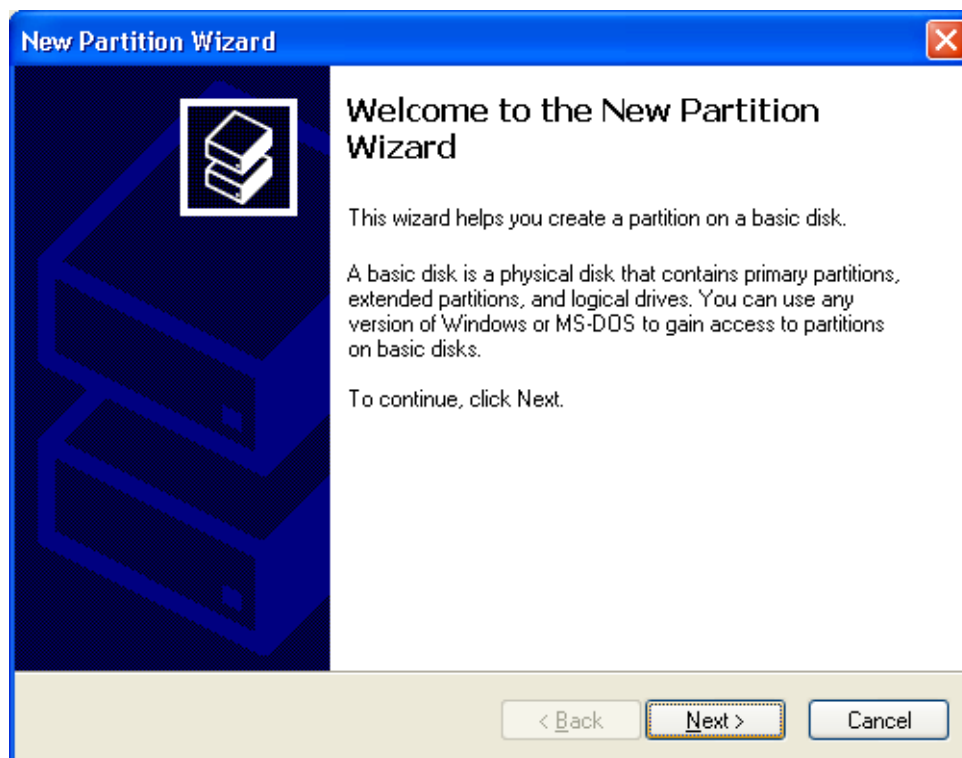
2. Select “Disk Management” and you will see your External HDD showed “Unallocated”.



3. Right-click on the “Unallocated” block and selects “New Partition”.

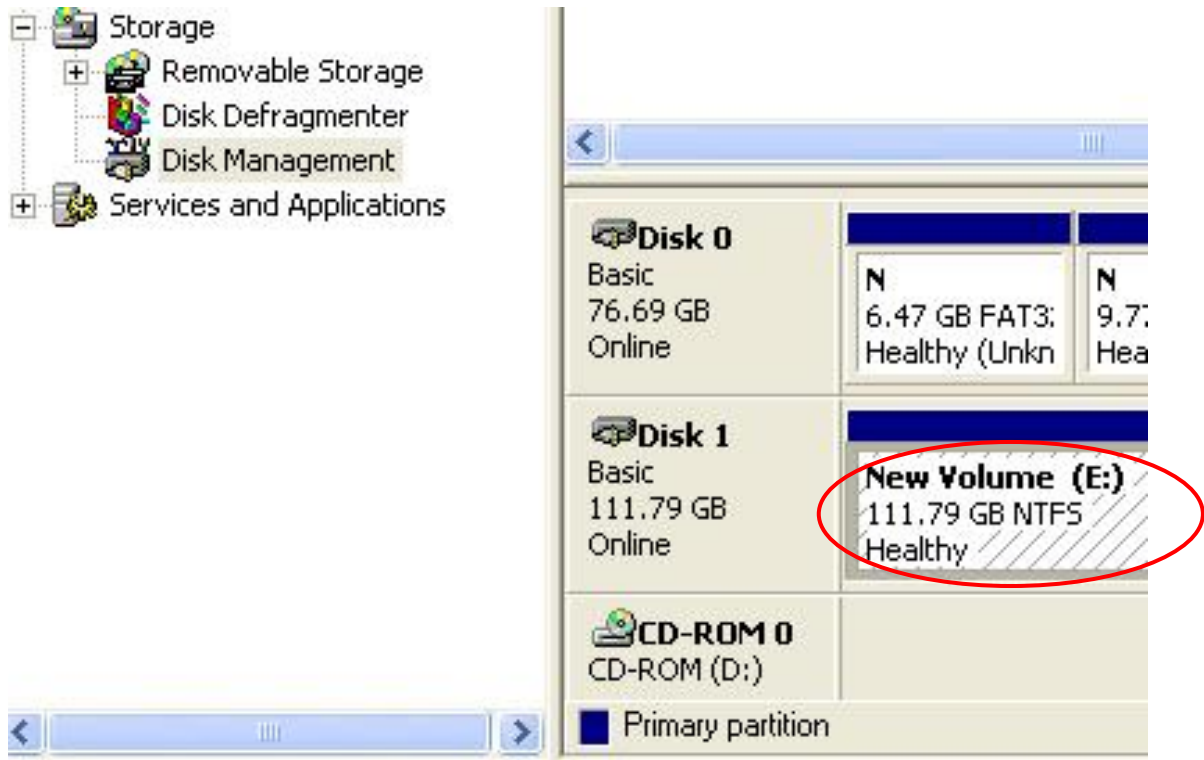


4. The “New Partition Wizard” will appear. Please follow the instruction of the wizard to complete.





5. When new partition is completed, the external HDD will be recognized as a “New Volume”.



6. Double-click “My Computer”. You will see the new volume appears on your PC.

