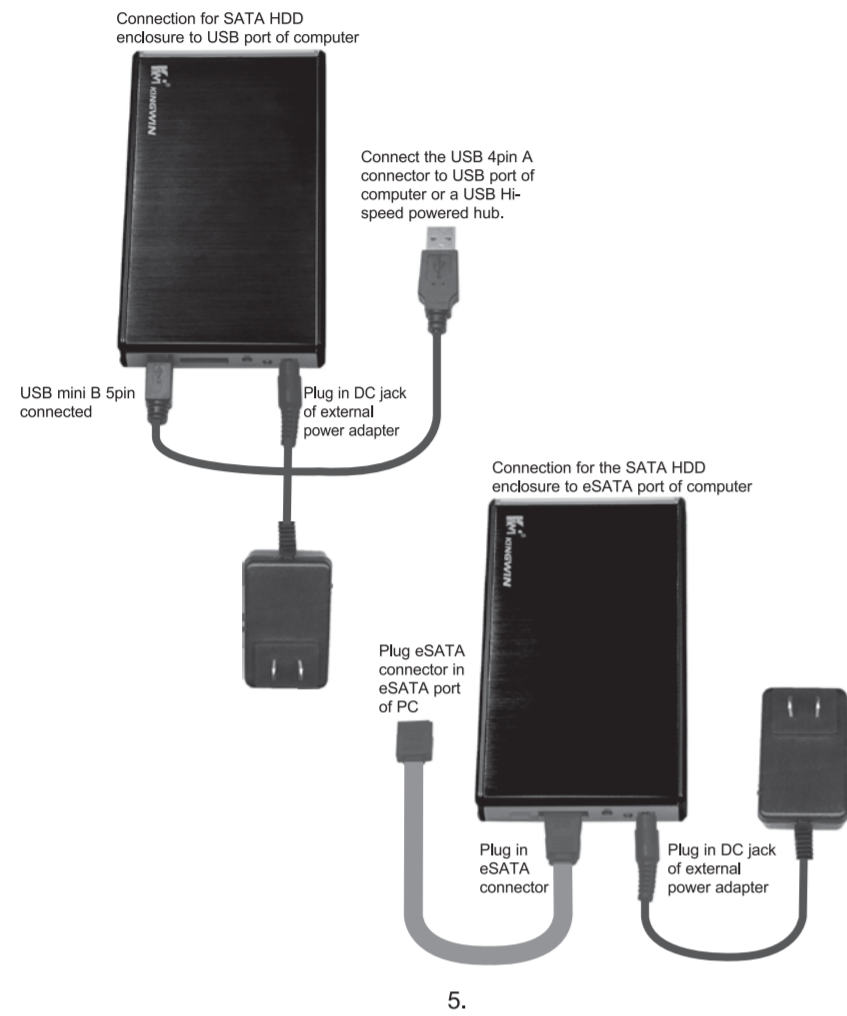


3) Alternatively, you may also use an external power adapter (optional) with the device. For most configurations, you will not need more power than what can be provided using the included USB 4-end adapter cable. If you wish to use an external power adapter with the drive enclosure, a universal adapter rated for 5V DC output at 2Amp and a tip with a positive center will work with the enclosure. If the package you purchased has an external power adapter included, Please follow the below instruction for connection. If the package you purchased which has no external power adapter included, you can purchase one at your local electronic store. be sure to follow any precautions and usage instructions provided with the power adapter to avoid any damage to the drive enclosure.



5.

4) The drive should be ready to use and will be visible under My Computer (Windows).

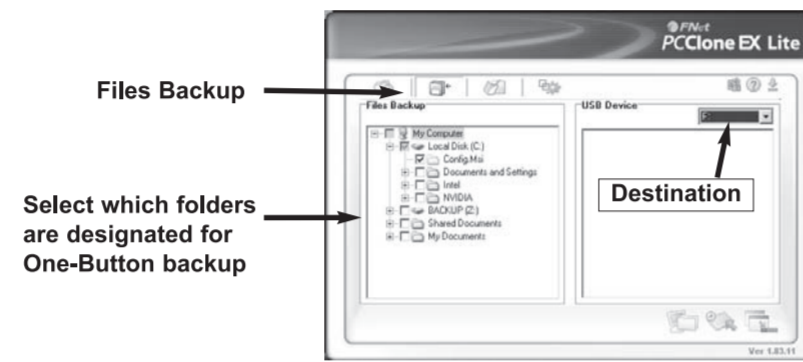
Using The One Touch Backup Utility :

Before the One Touch Backup will work, you are required to configure the sources and destination folders for backup.

Setting The Backup Source And Destination

Following installation, there should be an icon for PCClone EX Lite located on your desktop. If this is not the case, please click on the "Start" button, followed by "All Programs" to located the utility.

- 1) Launch the PCClone EX Lite utility
- 2) Click on "Files Backup" button
- 3) Using the check boxes provided, select which folders will be included in automatic backups
- 4) Select the intended destination of the backed up files, using the drop-down menu provided



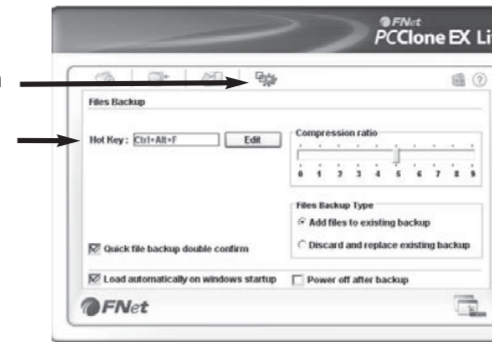
Setting A Hot-Key Sequence

If you wish to use a hot-key sequence to launch automated backups from your keyboard:

- 1) Click on the "Setup" button
- 2) Click "Edit"
- 3) Enter the "hot-key" sequence to be used for automated backups, and save your selection

6.

1. Click on the **Setup** button
2. Click **Edit**
3. Enter the **hot-key** sequence to be used for automated backups, and save your selection



Once the backup utility has been configured accordingly, you will be able to launch an automated backup session by pressing the button marked BACK UP, or entering the customized hot-key sequence.

PCClone EX Lite offers a wide variety of configuration options that can help customize your data backups. For further information, please click on the "Help" button.

Disconnecting The Enclosure From A Computer

- 1) Ensure that any programs that have accessed the drive are closed
- 2) Ensure that the LED on the back of the enclosure is not flashing green, which indicates the drive is being accessed
- 3) You may wish to use your operating system's "safe removal" feature to be absolutely sure that no data is being written to or read from the hard drive in the enclosure when you disconnect it from the computer. In Windows, you can click the "Safe Remove" icon and choose the enclosure from the menu.



- 4) Once the connected hard drive activity has terminated, it is safe to remove the enclosure from the host computer, by unplugging the eSATA or USB cable from the host computer.

7.



2.5" HDD Enclosure

USER MANUAL

Model: JT-25EU-BK
JT-25E-BK
JT-25EU-S
JT-25E-S

Version # U2HD925-M-001-JT

A simple way to add storage or backup files to your notebook or desktop PC. The 2.5" Drive Enclosure holds standard 2.5" SATA hard disk drive. It interfaces to any USB 2.0 or 1.1 port and can transfer data up to 480Mbps in USB2.0 mode. Or, Max. speed 3.0Gbps in SATA II mode.

Packaging Includes

- Model: JT-25EU-BK**
- 2.5" HDD Enclosure
 - USB 4-end adapter cable (combo version only)
 - E-SATA Connection Cable
 - Installation Driver (JT-25EU-BK only)
 - User Manual

Model: JT-25E-BK

- 2.5" HDD Enclosure
- E-SATA Connection Cable
- User Manual

Specification :

| Model | JT-25E-BK JT-25E-S | JT-25EU-BK JT-25EU-S |
|------------------------------|------------------------------|--|
| HDD Support | 2.5" SATA Hard Disk | 2.5" SATA Hard Disk |
| Internal Hard Disk Interface | Serial ATA | Serial ATA |
| PC Interface | eSATA | eSATA or USB |
| Compliance | Serial ATA I/II | USB 2.0/1.1v & Serial ATA I/II |
| Data Speeds | Max. 1.5/3.0 Gbps | USB:12/480 Mbps SATA I/II:1.5/3.0Gbps |
| Connector of Ex. Enclosure | eSATA receptacle, power jack | eSATA & USB Mini B receptacle, backup button, power jack |
| OS Support | Windows/Mac | Windows/Mac |
| One Touch Backup Utility | Not available | Only available in USB mode |

1.

System Requirements :

- 64MB of RAM
- 266MHz or faster CPU
- One USB Connector
- One E-SATA Connector

Operating System Support :

Windows: Vista, XP, 2000, ME, 98SE
Mac OS : 10.3.x, 10.1.2, 9.2.1, 9.0.x

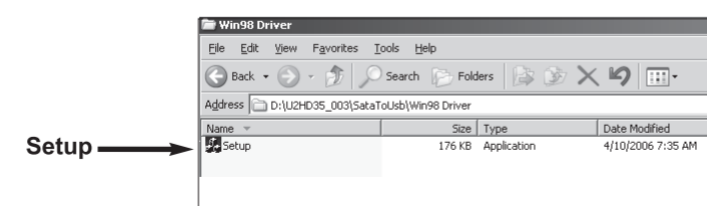
Software Installation :

Note: Be sure your USB host card supports USB2.0. If not, this device can only run USB1.1 & 1.0

Please complete the software installation prior to connecting the removable hard drive enclosure to the host PC.

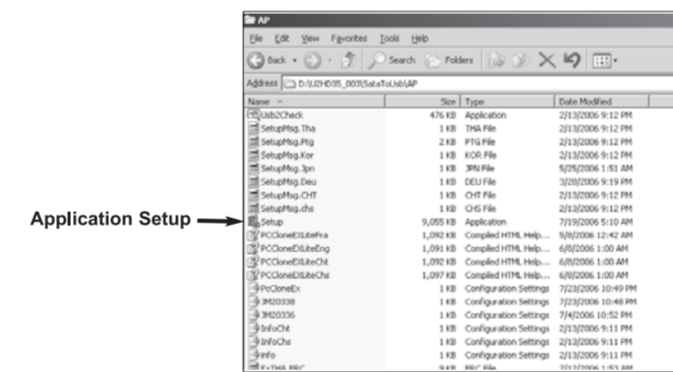
The following description includes the steps necessary to install drivers for the 2.5" SATA drive enclosure for use with Windows 98SE. If you are using Windows ME, 2000, XP, 2003 Server or Vista, please skip to step #5.

- 1) Power on the computer that will be used to connect the hard drive enclosure.
- 2) Insert the driver CD provided into the computer's CD/DVD-ROM drive.
- 3) From the Windows Desktop, double-click on the "My Computer" icon. Once the "My Computer" window has opened, locate and double-click on the CD/DVD-ROM drive icon.
- 4) To locate the driver file, browse to "U2HDD\U2HDD35_003\SataToUsbWin98driver" and double-click on the "Setup" file. Follow all prompts to complete driver installation.



- 5) If you wish to use the One-Button Backup feature with your removable drive, it will be necessary to install the utility application located on the driver CD. To do so, browse to "U2HDD\U2HDD35_003\SataToUsbAP", and double-click on the "Setup" icon, as depicted:

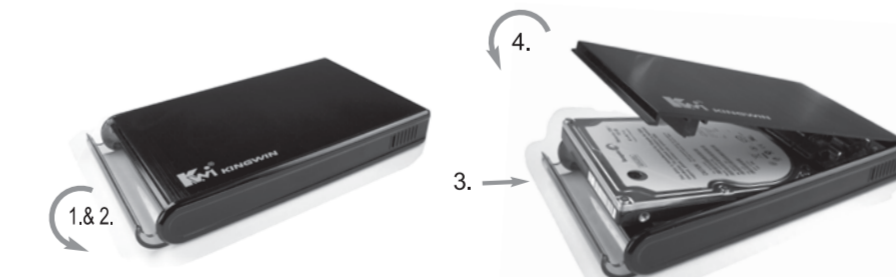
2.



Follow all prompts, to complete installation. Once completed, please reboot the computer for the changes to take effect. Upon successful installation, the backup utility (PC Clone EX Lite) will be available for use.

Hardware Installation :

- 1) Place the enclosure on a flat, stable surface
- 2) Pull out the front cover from the enclosure
- 3) Gently install the 2.5" SATA hard drive into the SATA connector inside the enclosure, push in the drive, so it connect tightly to the SATA connector
- 4) Close the top cover of enclosure



Connect The Enclosure To The Host Computer :

This product has been tested with Windows 98SE, ME, 2000, XP, 2003 Server and Vista. Other operating systems may also support this device; consult your documentation or a computer service professional for details on whether this product will work with your operating system and configuration.

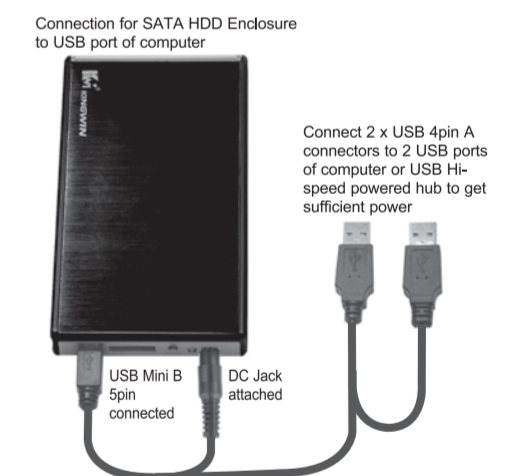
When used with the Windows operating systems noted above, the drive enclosure is "hot-swappable" which means the drive can be connected and disconnected while the computer is running and will be immediately accessible to the user like any other hard drive.

3.

- 1) Place the enclosure near the computer you wish to use
- 2) Connecting the enclosure to the computer host :

2-1) Using USB :

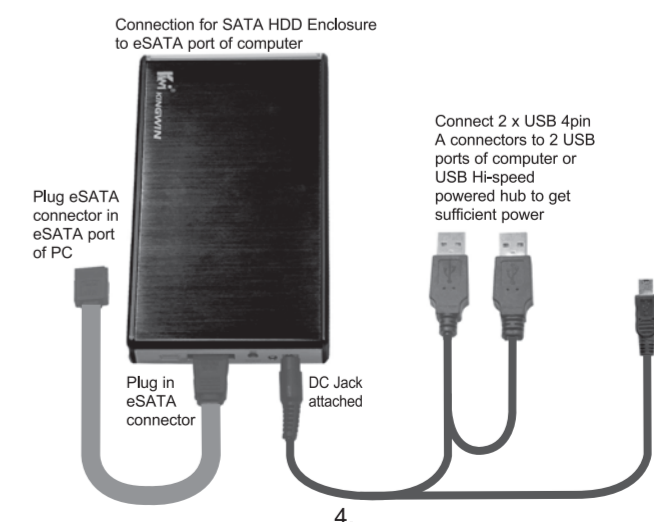
Using the provided USB2.0 4-end adapter cable, connect both USB mini B 5-pin connector and the DC connector to the rear of the enclosure. Then, on the opposite end, connect the 2 USB 4-pin connector to the 2 available USB ports on the back of your computer, or a USB Hi-Speed powered hub. The LED indicator on the rear panel of the enclosure should light up as red to indicate power.



2-2) Using eSATA :

2-2-1) Using the provided eSATA cable, connect the eSATA connector to the rear of the enclosure. Connect the opposite end of the cable to an available eSATA port on the back of the computer.

2-2-2) Using the provided USB 4-end adapter cable, plug DC jack into the rear of enclosure, connect the opposite 2 ends USB 4-pin connectors to 2 available USB ports on the back of the computer or a USB Hi-Speed powered hub. The LED indicator on the rear panel of the enclosure should light as red to indicate power.



4.