



2.5" / 3.5" Internal Tray-Less Hot Swap Rack



USER'S MANUAL KF-255-BK

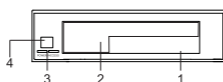
Quick Installation Guide

Specifications

- Product name: KF-255-BK
- OS: Windows Vista/ XP/2000/98SE/ME/7/8, MAC 10X+
- Interface: Supports SATAII (3.0 Gb/s)
- Fits all 2.5" or 3.5" SATA / SSD hard disk
- Support hot swap
- Material: Stainless Steel & ABS Plastic
- Dimensions: 110mm(4 5/16")L x 146mm (5 3/4") W x 41mm (1 5/8") H
- Weight: 180g (0.4LBS)
- Color: Black
- Operation Temperature: 0° - 55° C

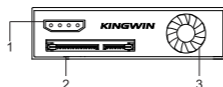
Front panel

1. For 2.5" SATA hard disk
2. For 3.5" SATA hard disk
3. Power/Access LED light
4. Power On/Off bottom

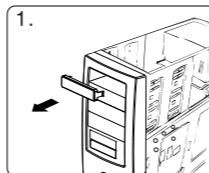


Rear panel

1. 4pin Molex connector
2. SATA Power 15Pin+ SATA Data 7Pin
3. Air vent

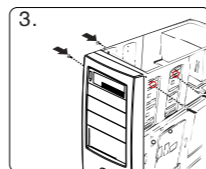
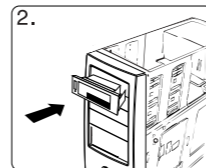


Installation



1. Remove the slot cover of an empty 3.5" floppy bay

2. Carefully insert the KF-255-BK into the bay and push it inward until the KF-255-BK screw hole is aligned with the hole of the bay



3. Secure the KF-255-BK with the packed screws. Use 2 screws on each side to securely hold the device

Connect the HDD-ROM cable



1. Insert the SATA Power 15P +SATA Data 7P connector into the KF-255-BK, then another end connect to PC power plug, and motherboard or the SATA RAID card



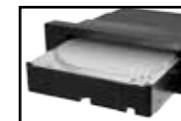
2. OR Insert Molex 4P Power + SATA 7P cable to the KF-255-BK, then another end connect to PC power plug, and motherboard or the SATA RAID card

Before connecting the patent 7+15P or 4pin Molex cable with PC or with the KF-255-BK, please check and make sure there are no objects beside the connectors that may affect the mechanical assembly or become a possible source of an electrical short

Install HDD



1. Install 2.5" hard disk to KF-255-BK



2. Install 3.5" hard disk to KF-255-BK



- 1) After inserting HDD, carefully push until it is seated into position. Excessive force may damage its mechanical parts.
- 2) If the HDD is inserted backward into the tray, forcing the device may damage the KF-255-BK



Kingwin is not responsible for any data loss or HDD damage in the process of using the KF-255-BK



KWI Technology Inc. - U.S.A. (Headquarters)
 4020 Valley Blvd, Unit 100
 Walnut, CA 91789
 TEL: 1-909-598-2888
 FAX: 1-909-348-1133
 E-MAIL: info@kingwin.com
 Website: www.kingwin.com

MADE IN CHINA