



# KF-261-BK

4 x 2.5" SATA Hot Swap Removable SSD/HDD Rack

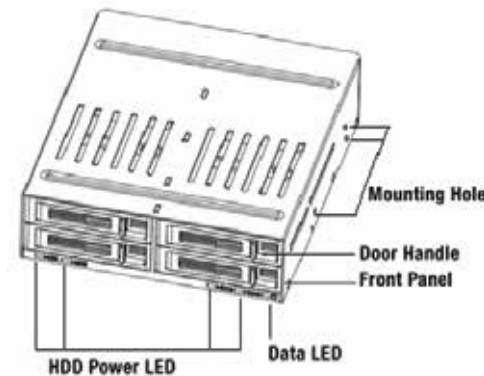


## USER'S MANUAL

Quick Installation Guide

### SPECIFICATIONS

Hard Disk Type:	2.5" SATA x 4
OS:	Windows 98/2000/Me/XP/Vista/7/8/ Server2008
	Mac 10.9 or above
Compatibility:	SATA I, SATA II, SATA III
Transfer Rate:	Up to 6 Gb/sec
Interface:	Serial ATA
Color:	Black
Hot Swap:	Yes
Dimension:	6 3/4"(170 mm)D x 5 3/4"(146 mm)W x 1 5/8"(42 mm)H
Weight:	1.10lb (498g)



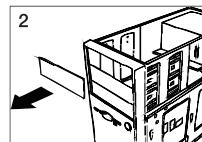
### FEATURES

- Suitable for use in 5.25" drive bay
- Fit 4 x 2.5" SATA SSD/HDD
- Removable tray design
- Hot-plug capabilities
- Active cooling fan reduce temperature



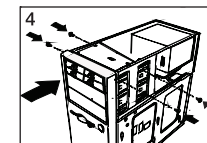
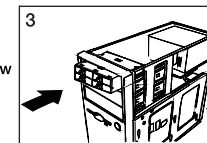
### INSTALLATION

- Please turn off the power before install KF-261-BK
- Remove the slot cover of an empty 5.25" bay (see pic 2)



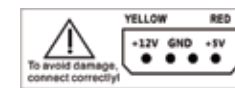
### INSTALLATION

- Carefully insert the KF-261-BK into the bay and push it inward until the KF-261-BK mounting screw hole is aligned with the holes of the bay. (see pic 3)
- Secure the KF-261-BK with screws to security hold the device (see pic 4)
- Connect 4 pin power to KF-261-BK
- Insert one end of the SATA7P cable to KF-261-BK the other end to the mother board.



### NOTICE

1. Please connect 4 pin power correctly according to below diagram, Kingwin is not responsible for any software, hardware, or data lost within the hard drive.

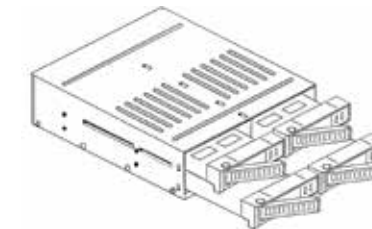
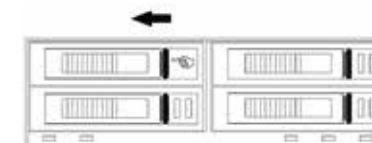


### NOTICE

2. Before connecting the patent 7+15P SATA cable with the PC or with KF-261-BK, please check there is no object on nearby terminals that may affect the mechanical assembly or become a possible source of an electrical short.

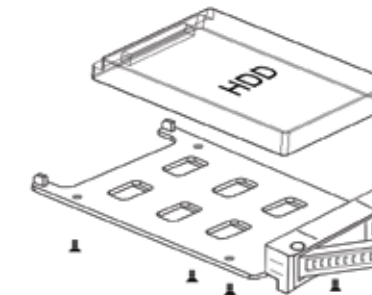
### INSTALL SSD/HDD

- Push left, open the panel and pull out the inner tray



### INSTALL SSD/HDD

- Insert SSD/HDD on the tray and secure with screws



- Ensure the SSD/HDD screw onto the tray and gently insert back to KF-261-BK

### WARNING



- Do not eject the SSD/HDD during data transfer
- Carefully remove SSD/HDD from KF-261-BK, the HDD can reach temperatures of over 50°C

**WARNING!**  
Please handle with care. Kingwin is not responsible for any software, hardware, or data lost within the hard drive

FC CE  
www.kingwin.com