

KF-1000-BK

3.5" Internal Tray-less
Hot Swap Rack



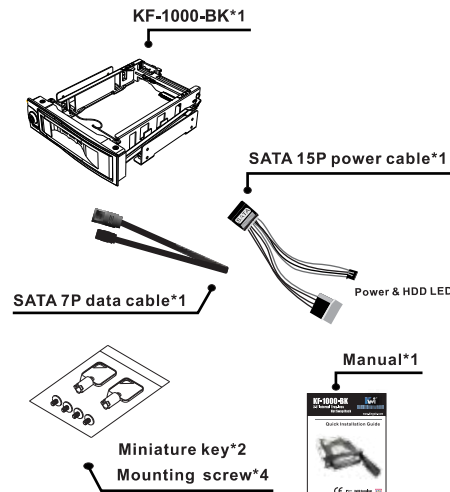
www.kingwin.com

Quick Installation Guide

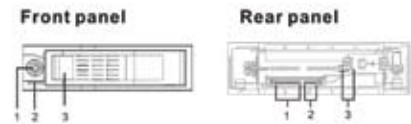


Content Description

This package is completed with these items:
KF-1000-BK*1; SATA 15P power cable*1;
SATA 7P data cable*1; Manual*1; Key*2; Screw*4

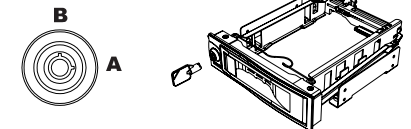


Parts



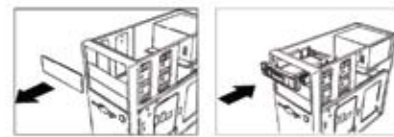
- | | |
|---------------------------------------|--|
| 1. Key lock | 1. SATA power connector(15P) |
| 2. LED indicator (for Power & Access) | 2. SATA data connector(7P) |
| 3. Spring lock | 3. Power &HDD LED are connected through a small 4P connector |

Key lock

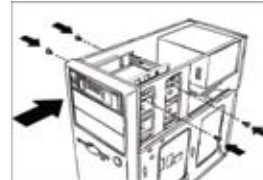


A: Lock
B:Unlock

Installation



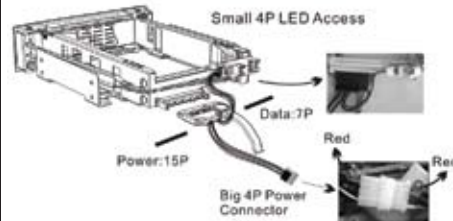
1. Remove the cover of an empty drive bay
2. Smoothly insert KF1000-BK into the bay and push it inward until the KF1000-BK screw hole is aligned with the hole of the bay



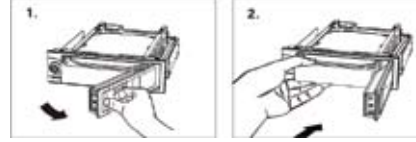
3. Secure KF-1000-BK with screws, use two screws on each side to securely hold the device
4. While installing, the direction must be right. The lock at left, the pivot of the door at right

Connection

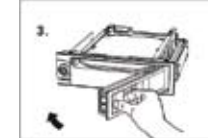
1. Connect one end of the SATA 15P power cable(15P) to the rear side of KF-1000-BK, another end (big 4P power) to the power port in the PC case
2. Connect the small 4P port of the SATA power cable (15P) to the PCB's joint on the back of KF-1000-BK
3. Connect one end of the SATA 7P data cable to the back of KF-1000-BK, and connect the other end to the main board or the SATA RAID card



Basic Usage



1. Pull the spring lock to open the front door
2. Insert the HDD into KF-1000-BK with its printed label side up and make sure the HDD connector is inserted into KF-1000-BK



3. Press the door to push the hard drive into KF-1000-BK until the door is locked

⚠ The door will not be closed firmly if HDD is inserted in wrong direction. The HDD-ROM will get damaged if the door is closed with force.

Unloading Hard Drive

1. Unlock key lock smoothly, then pull the spring lock to open the door
2. Carefully take the hard drive out from KF-1000-BK

⚠ HDD may reach a temp. of 50°C, it will not burn hands, but still need to be careful. Hold the HDD by its edge please, do not touch its PCB

1. If your main board does not support SATA II (SATA 3.0), please adjust/change the pin tap from to be which is under SATA I mode. (SATA 1.5Gb/s)
2. Please operate the HDD carefully while ejecting it out from KF-1000-BK, or the protruding FPC Connector on its PCB will be unexpectedly damaged