

0mm



TOOL FREE SCREW-LESS [HDD-ROM] 2 x 2.5" Internal Enclosure



USER'S MANUAL KF-251-BK



Quick Installation Guide

Specifications

- ◎ Product name: KF-251-BK
- ◎ OS: Windows Vista/XP/2000/98SE/ME; Win 7 MAC 10x+
- ◎ Interface: Supports SATA II (3.0Gb/s)
- ◎ Fits all 2.5" SATA hard disk
- ◎ Supports hot swap
- ◎ Weight: 286g
- ◎ Dimensions: 140(L) x 101.6(W) x 25(H) mm
- ◎ Operation Temperature: 0° ~ 55°C

Package Content

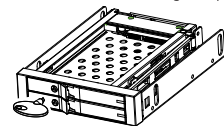
Accessories	Quantity
KF-251-BK	1pcs
SATA 7P Data Cable	2pcs
SATA 15P to 4P+4P Power Cable	2pcs
Screw	4pcs
Manual	1pcs
Insulating pad	2pcs
Pin Protector	2pcs
Key	1pcs

Switching key Triangular lock/unlock with the key (counter-clockwise rotated 90 degrees).

LOCK

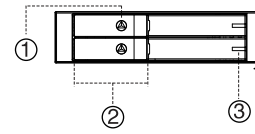


- Unlock
- Lock



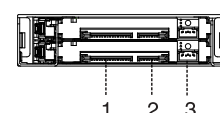
Front panel

1. Lock
2. Easy latch door
3. HDD LED indicator

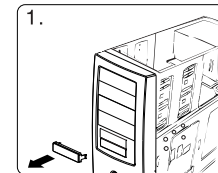


Rear panel

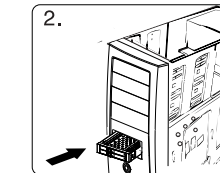
1. SATA power connector (15P)
2. SATA data connector (7P)
3. LED access port (4P)



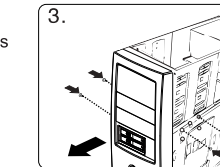
Installation



1. Remove the slot cover of an empty 3.5" floppy bay.



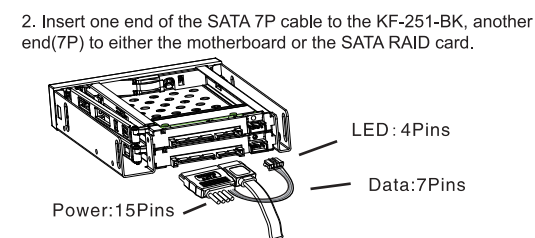
2. Carefully insert the KF-251-BK HDD-ROM into the bay and push it inward until the KF-251-BK HDD-ROM's screw hole is aligned with the hole of the bay.



3. Secure the KF-251-BK HDD-ROM is packed with screws, use 2 screws on each side to securely hold the device.

Connect the HDD-ROM cable

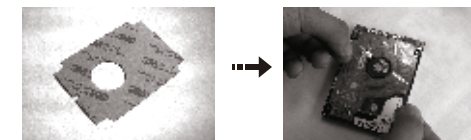
1. Insert the SATA 15P connector into the KF-251-BK 15P connector, then connect the big power 4P connector to the PC's 4P power plug, and the small 4P LED wire connector to the 4P LED port at the back of KF-251-BK.



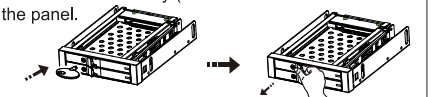
1. Be sure to connect the 4P LED wire, or the LED indicator will not be lighted up.
2. Before connecting the patent 7+15P SATA cable with the PC or with the KF-251-BK HDD-ROM, please check if there is no object on or beside the terminals that may effect the mechanical assembly or become a possible source of an electrical short.

Install HDD

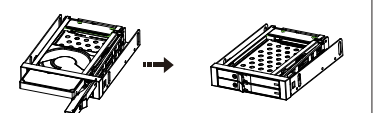
1. Attach the included mylar film as shown.



2. Triangular lock/unlock with the key (counter-clockwise rotated 90 degrees) open the panel.



3. Put the 2.5" HDD into the KF-251-BK and close the front panel.



1. After inserting HDD and closing the front door, carefully push the tray until it is seated into position. Excessive force may damage its mechanical parts.
2. If the HDD is inserted backward into the tray, forcing the device may damage the KF-251-BK HDD-ROM.

Eject HDD from the HDD-ROM

1. Turn the key "Anti-clockwise 90" to open the door.
2. Take the HDD out from HDD-ROM, and firmly close the front door. Turn the key "clockwise 90" to lock the door.

1. Do not eject HDD while it is busy.
2. Carefully take the HDD out from KF-251-BK HDD-ROM. The HDD can reach temperatures over 50°C. It will not burn the fingers but should be handled with care.
3. Kingwin is not responsible for any data loss or hard drive damage in the process of using the KF-251-BK.

KWI Technology Inc. - U.S.A. (Headquarters)
4020 Valley Blvd, Unit 100
Walnut, CA 91789
TEL: 1-909-598-2888
FAX: 1-909-348-1133
E-MAIL: info@kingwin.com
Website: www.kingwin.com